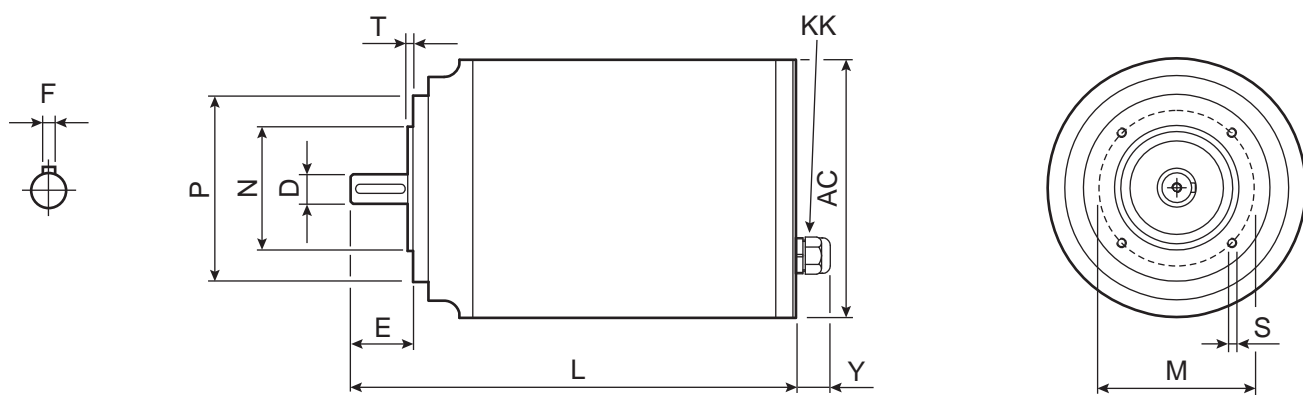


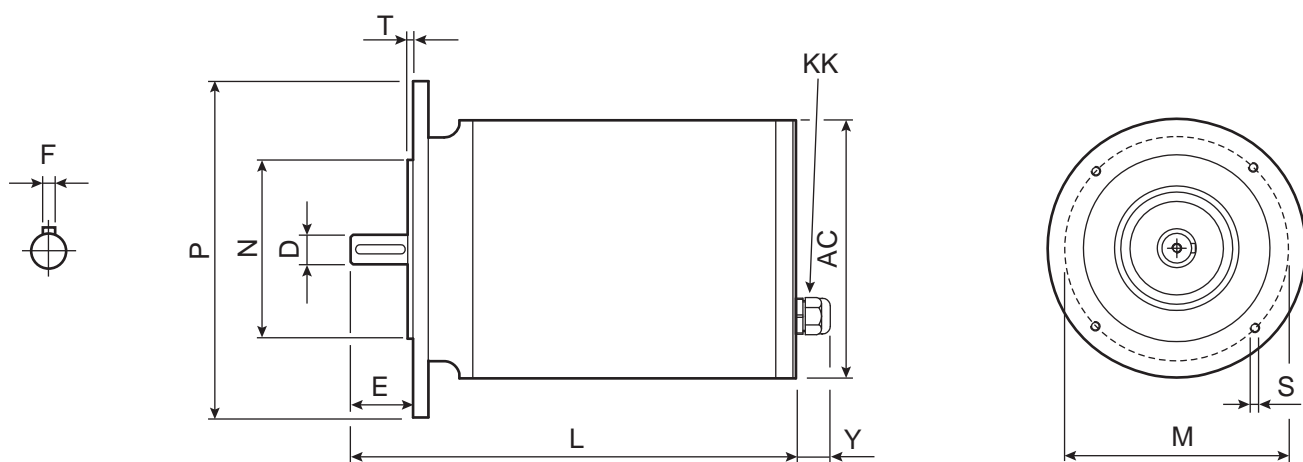
Dimensions

Stainless steel/aluminum steel motors - Motori elettrici in acciaio inox e in alluminio

B14 Standard



B5 On request on SPM series (not available on APM series). A richiesta per la serie SPM (non disponibile per la serie APM).



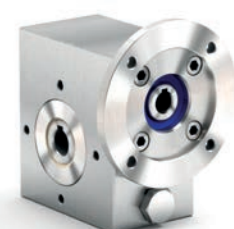
4 poles B5 - B14				B14													B5							
Motor	kW	rpm (min ⁻¹)	Nm	A (400V)	COS (φ)	D	F	E	L	AC	Y	N	M	P	T	S	Kg	N	M	P	T	S	Kg	KK
63A	0.12	1440	0.80	0.44	0.57	11 j6 M4	4	23	229	131	24	60 j6	75	90	2.5	4xM5	8.7	95 j6	115	140	3	4x10	9.4	M16x1.5 ø5-10
63B	0.18	1440	1.19	0.58	0.62				244								10.0						10.7	
71A	0.25	1440	1.66	0.72	0.64	14 j6 M5	5	30	266	131	27	70 j6	85	105	2.5	4xM6	11.6	110 j6	130	160	3.5	4x10	12.5	M20x1.5 ø7-13
71B	0.37	1440	2.45	1.10					286								13.5						14.4	
80A	0.55	1460	3.60	1.50	0.67	19 j6 M6	6	40	280	166		80 j6	100	120	3	4xM6	19.0	130 j6	165	200	3.5	4x12	21.0	
80B	0.75	1460	4.91	2.10					305								22.0						24.0	
90S	1.1	1460	7.20	2.90	0.70	24 j6 M8	8	50	345	166	30	95 j6	115	140	3	4xM8	27.0	130 j6	165	200	3.5	4x12	28.5	M25x1.5 ø10-14
90L	1.5	1460	9.81	4.00					390								33.0						34.5	

Other Clean-Geartech products

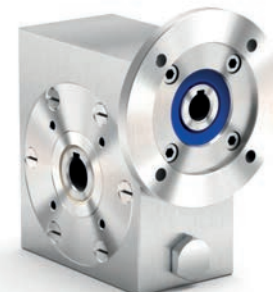
Riduttori Clean-Geartech

Stainless steel worm gearboxes

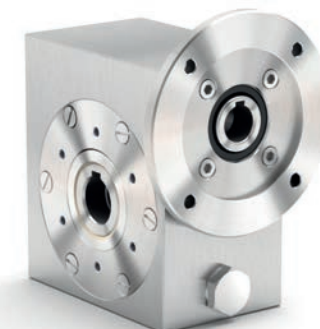
Riduttori a vite senza fine in acciaio inox



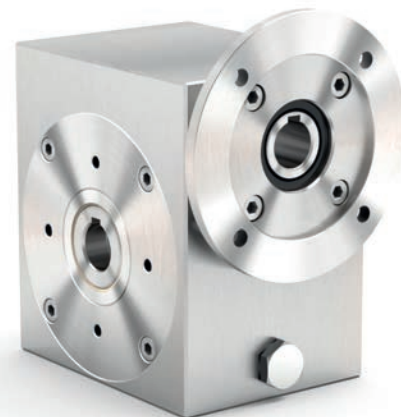
130
21 Nm



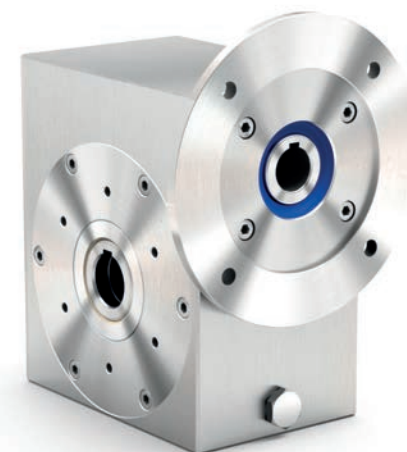
145
41 Nm



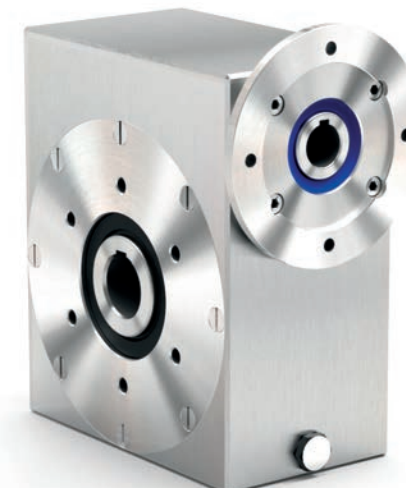
150
72 Nm



163
147 Nm



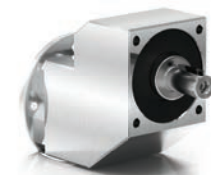
185
347 Nm



111
651 Nm

Stainless steel ratio multiplier

Riduttore ad uno stadio in acciaio inox



411
38 Nm



CLEAN-GEARTECH

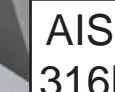
Stainless steel and aluminum Motors

Motori in acciaio inox ed in alluminio

Totally Enclosed Non Ventilated - Totalmente chiusi, non ventilati

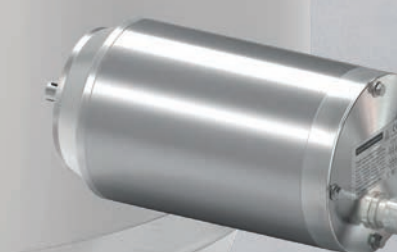
Totally clean smooth surface - Superfici pulite

Ideal for food and pharmaceutical use - Ideali per industria alimentare e farmaceutica



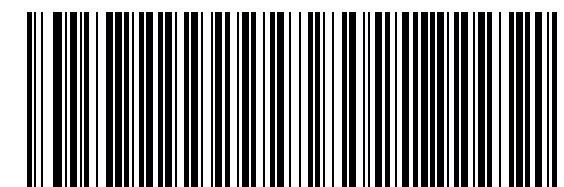
SPM - Stainless steel Premium Motors

APM - Aluminum Premium Motors



CLEAN-GEARTECH

e-mail: info@cleangeartech.com web: www.cleangeartech.com



DP - SS MM - CGT017 - ML

SPM - Stainless steel Premium Motor

APM - Aluminum Premium Motor

Features - Caratteristiche motori elettrici in acciaio inox e in alluminio

Stainless steel (SPM)



SPM APM



Easy connection with Wire-to-Wire splicings heat-shrinkable.
L' utilizzo di connettori testa-testa termo-sigillanti rende semplice il collegamento dei cavi.



Totally Enclosed Non Ventilated (IC410) and completely smooth surfaces guarantee the highest needs on ultra-hygienic clean lines.
Totalmente chiuso non ventilato (IC410), le superfici completamente lisce garantiscono gli standard di igienicità più elevati richiesti dal mercato.

Aluminum (APM)



SPM APM

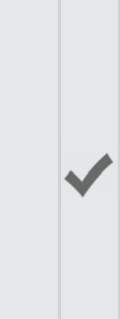


All external components are manufactured in AISI 316L stainless steel, motor shaft is in 420 stainless steel with magnetic properties. There's no paint to flake off. The surfaces are completely smooth. This gives excellent resistance to corrosion and represents a reliable and durable solution where hygiene is essential.
Tutti i componenti esterni sono realizzati in acciaio inox AISI 316L, l'albero motore è in acciaio inox 420 con proprietà magnetiche. Tutte le superfici sono completamente lisce. Questo dà eccellente resistenza alla corrosione e una soluzione affidabile e duratura laddove l'igiene è fondamentale.



The surface temperature is limited thanks to an accurate electromagnetic design and to the additional internal active material. The efficiency class is IE3.
La temperatura di superficie è contenuta grazie ad una progettazione accurata. La classe di efficienza è IE3 (≥ 0.75kW).

SPM APM



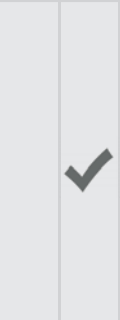
The APM range has no cooling fins and it is treated with an innovative "NTT" coating with nano particles (patented system), which makes the surface very easy to clean and resistant to major aggressive used in sanitizing.
La gamma APM non ha alette di raffreddamento ed è trattata con un innovativo rivestimento «NTT» alle nano particelle (sistema brevettato) che rende la superficie estremamente facile da pulire e resistente ai principali agenti aggressivi usati nella sanificazione.



Stainless steel Hygienic cable gland certified EHEDG.
Pressacavo in acciaio inox, con design igienico, certificato EHEDG.



Pipe housing without weldings, terminal box on the NDE side and nice look.
Carcassa tubolare senza saldature, coprimorsettiera posteriore e look accattivante.



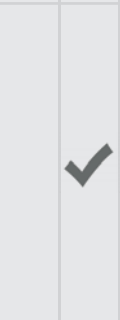
All external components are manufactured in aluminum, motor shaft is in 420 stainless steel with magnetic properties, all screws in 316L stainless steel.
Tutti i componenti esterni sono realizzati in alluminio, l'albero motore è in acciaio AISI420 con proprietà magnetiche, tutte le viterie in AISI316L.



Nameplate made with laser on the back cover.
Targhettatura laser sul coperchio posteriore.



Motors are suitable to INVERTER DUTY OPERATION with large range at constant torque, thanks to low losses lamination, vacuum impregnation of the windings, inverter duty magnet wires. Stator and rotor are coated with anti-oxidant painting.
I motori sono idonei al funzionamento con INVERTER con ampio range a coppia costante, grazie a lamierini a basse perdite e all' impregnazione degli avvolgimenti sottovuoto. Statore e rotore sono rivestiti con vernice antiossidante.



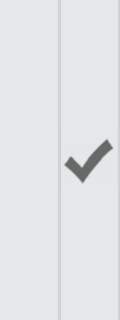
Standard plastic Hygienic cable gland.
Pressacavo standard in plastica.



Viton oil seals and O-Rings guarantee a IP69K protection.
Anelli di tenuta e O-Rings in Viton garantiscono un grado di protezione IP69K.



NDE bearing axially locked, accurate mechanics.
Cuscinetto posteriore bloccato assialmente, esecuzione meccanica precisa.



Nameplate on the back cover.
Targhettata sul coperchio posteriore.